



*Revitalizing Dewey city parks  
to enrich our community through recreation  
and relaxation of mind, body and soul.*

A non-profit shared effort of  
The Dewey Lions Club,  
The City of Dewey and  
Friends of Dewey Parks

918.440.4031  
608 S Barclay Ave,  
Dewey, OK 74029

FB: friendsofdeweyparks  
[www.friendsofdeweyparks.org](http://www.friendsofdeweyparks.org)  
[hello@friendsofdeweyparks.org](mailto:hello@friendsofdeweyparks.org)



*Revitalizing  
Dewey city parks  
to enrich our  
community through  
recreation and  
relaxation of mind,  
body and soul.*

*A non-profit  
shared effort of  
The Dewey Lions Club,  
The City of Dewey and  
Friends of Dewey Parks*

Lucinda Bray  
President

Louis Davis  
Vice President

Martanne Louthan  
Secretary

Louise Inda  
Treasurer

Amanda Nichols

Lori Herron  
City of Dewey



918.440.4031  
608 S Barclay Ave,  
Dewey, OK 74029

friendsofdeweyparks.org  
info@friendsofdeweyparks.org

Hello!

We are the Friends of Dewey Parks (FODP), a non-profit organization working with the City of Dewey and the Dewey Lions Club to renovate the historic downtown Lions Park. Our vision is to create an inclusive, enjoyable space for all community members with a new park entrance, accessible public restrooms and playground equipment, splash pad, lighting, sidewalks, and professional landscaping.

To achieve our goal of raising \$350,000 for these improvements, we are pursuing various fundraising methods. One of our most personal initiatives is the sale of legacy bricks. These bricks will be placed in the new entrance and walkway and can be inscribed with names, messages, or logos. Please find the order form enclosed along with plans for the park project .

For more details and to stay updated on our fundraising events, visit our website at [www.friendsofdeweyparks.org](http://www.friendsofdeweyparks.org) or our Facebook page.

Send donations and brick orders to FODP, 608 S Barclay Ave., Dewey, OK 74029. For inquiries, contact Louise at 918-440-4031 or email [Louise.inda608@gmail.com](mailto:Louise.inda608@gmail.com).

We look forward to building an exciting, inclusive park for our community and hope you'll join us in this exciting project!

Sincerely,

Louise Inda

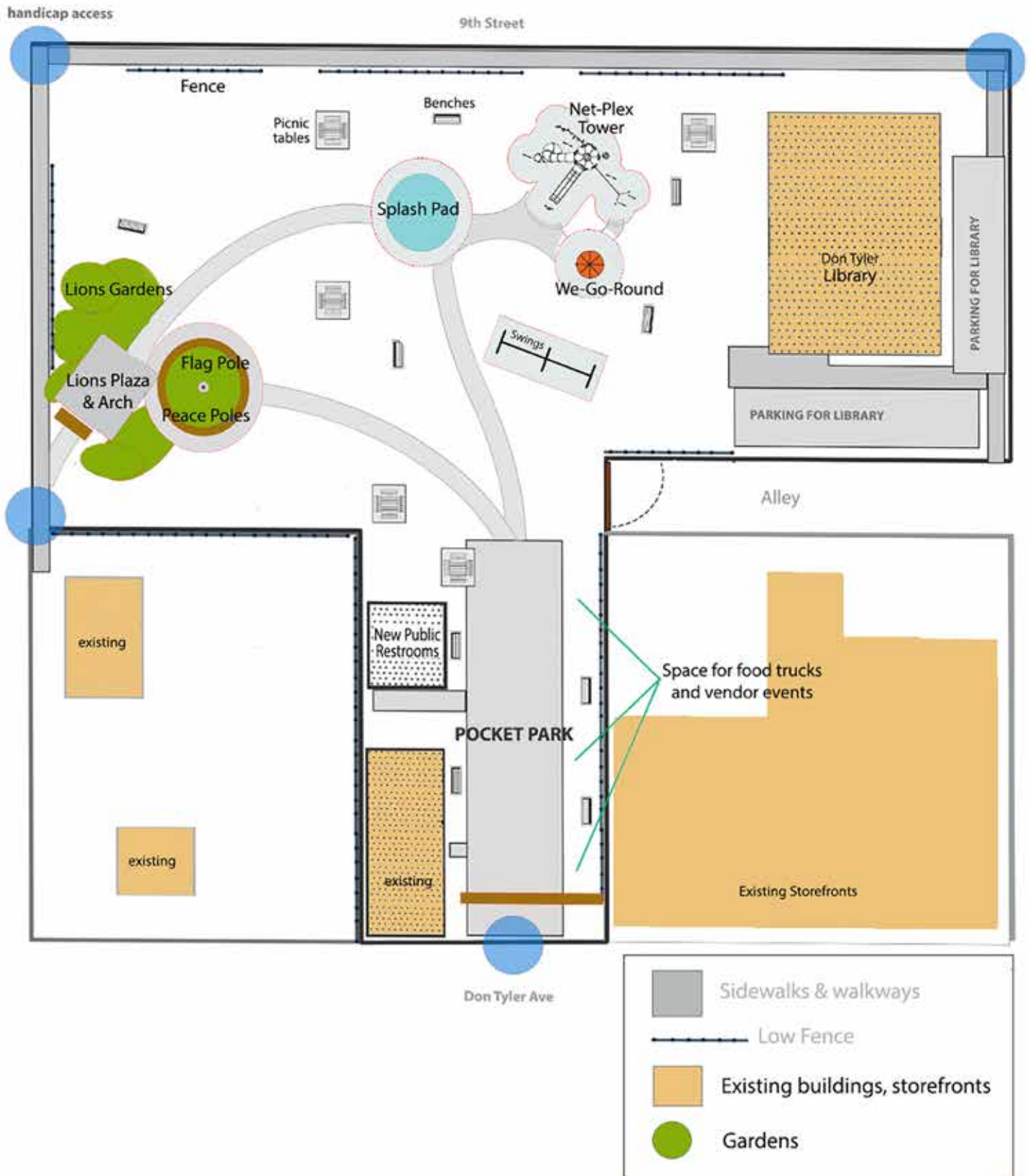


LIONS PARK  
WAITING  
FOR  
RENOVATION





# LIONS PARK RENOVATIONS



# PLAY EQUIPMENT FOR THE PARK



Splash Pad



Super Net-plex 12'Tower  
<https://youtu.be/6vPmmekgquM>



LIBRARY

ING FOR LIB



We-Go-Round  
<https://youtu.be/bU4CQWpC8jc>



Single Post Swingset

To see the Super Net-Plex and We-Go-Round in action go to youtube and use the links on the photo.

Don Tyler Ave

-  Sidewalks & walkways
-  Low Fence
-  Existing buildings, storefronts
-  Gardens



## ITEMS NEEDED FOR THE PARK



### Super Netplex® 12' Tower

New heights in Netplex® for new heights of fun! The center spiral belting with grippy texture provides an easy way for kids of all abilities to climb to the top for a whooshy ride down two slides. Now everyone can enjoy the spectacular view from up top while those watching below have perfect sightlines to all the activity.



### We-Go-Round

This patent pending next-generation merry-go-round offers plenty of space for kids of all abilities. Strategic seating areas leave ample room for wheelchairs, including those with a wheel-locking mechanism. Once aboard, everyone faces the center so they can easily share smiles, laughter and conversation while in orbit.

Under rooftop shade, riders can participate in the action using the center handhold while others are turning from the outside. Of course, our built-in resistance mechanism maintains a reasonable maximum speed, ensuring all spins on the We-Go-Round remain within the fun zone.



### AquaSmart Splash Pad Package H

Kids can explore a geometric water maze that lets them decide how wet they want to get. This package is powered by patented HydroLogix® System for low-water consumption and low water flow. Choose from applicable Aquatix colors.

AquaSmart Package H contains:  
HydroLogix® System  
AquaHedra®  
GeoMister Small (2)  
Tot Wellspring  
Arch Jet Manifold  
Triple Arch Jets (2)



## ITEMS NEEDED FOR THE PARK



Single Post Swingset

The **Single Post Swing** is elegantly simple, as well as an economical choice for your outdoor playground. No playground is complete without a swingset, and the Single Post Swing is an easy, space-saving choice to add an extra play element that children love. Swinging is a sensation that children seek. It stimulates their brain as well as their body, helping them learn balance, spatial awareness and rhythm. And it strengthens their core muscles so they benefit from swinging in multiple ways.



### 8 - 6' Park Benches

Graceful contemporary lines deliver dramatic standout style. Utilizing ergonomic elements and a sleek profile, these aluminum benches come standard with attached, curved arm rests to enhance the level of aesthetic, comfort and overall experience. Constructed entirely with lightweight, corrosion resistant aluminum materials and protected in a resilient powder-coating finish, these popular benches are long lasting and tough as nails.



### 5 - 6' Backless Park Benches

Ultramodern design elements blended with all-aluminum construction, these contemporary aluminum flat benches make a visual statement. A top choice for outdoor installations creating casual, comfortable sitting areas. These backless benches provide open, two-way seating featuring a slightly contoured seat with clean, rounded edges to ensure user comfort and safety. The powder-coated aluminum construction offers rust-proof, lightweight durability that is ready for any environment.



### 8 - Octagon Nexus Pedestal Table with Diamond Pattern

Designed to withstand outdoor conditions, all year round, even after prolonged usage. A thick square beam in its center holds up the table as well as four separate support posts connected to the seats on each side. These provide added strength and help protect the entire structure, from damage. ADA accessible designs for this table have only 2 or three seats attached. This allows the remaining sides of the table to be used for wheelchair access. There are also multiple color, mounting, and coating options to choose from.



# SPONSORSHIP OPPORTUNITIES

---

- Buy a Brick
- Place a Bench
- Provide a Picnic Table
- Purchase a piece of the Playground Equipment
- Donate to the total Renovation of the Park



The  
Oklahoma  
Monarch  
Butterfly \$10,000

## SPONSORSHIP LEVELS

---

We are grateful for your help with this community project. Donations in any amount are greatly appreciated and will be put to good use in the park!

Support within these sponsorship levels will be recognized with a sponsor brick noting donor's name and donation placed in the park. When funding a specific item, a plaque with the donor's name will be placed on the item.

Thank you



Oklahoma's  
Scissor-tailed  
Flycatcher \$5,000



Oklahoma's  
Red Bud \$2,500



Oklahoma  
Rose \$1,000





# Friends of Dewey Parks Lions Park Renovation Project

A joint project of The City of Dewey, the  
Dewey Lions Club and Friends of Dewey  
Parks.

**2** bricks  
are  
offered

**Add a  
graphic  
for only  
\$25 more**

PROUD RESIDENTS  
OF DEWEY SINCE 1952  
THE TYLER FAMILY

4" x 8" Brick - \$75



8" x 8" Brick - \$150

Donor's Name: \_\_\_\_\_

Address: \_\_\_\_\_ Phone: \_\_\_\_\_

City: \_\_\_\_\_ State: \_\_\_\_\_ Zip: \_\_\_\_\_



Bulldoggers



No art ☐



Daisy



Buffalo



Butterfly



Bull



Rose



Pig



Cross



Horse



Bird



Sheep



Tree



Heart



Heart Horse



Flag



Paw Print



## Please engrave our personalized brick as follows:

4" x 8" bricks can be personalized with up to 3 lines of text, 20 characters per line without logo or 16 characters with logo.

8" x 8" bricks can be personalized with up to 5 lines of text, 20 characters per line with or without logo.

ANY SYMBOL IS CONSIDERED ONE SPACE (PERIOD, COMMA, DASH). ALL TEXT IS CENTERED.

Line 1 (20 spaces total)

--	--	--	--	--	--	--	--	--	--	--	--	--	--	--	--	--	--	--	--

Line 2 20 spaces total)

--	--	--	--	--	--	--	--	--	--	--	--	--	--	--	--	--	--	--	--

Line 3 (20 spaces total)

--	--	--	--	--	--	--	--	--	--	--	--	--	--	--	--	--	--	--	--

Line 4 (20 spaces total)

8" x 8" only

--	--	--	--	--	--	--	--	--	--	--	--	--	--	--	--	--	--	--	--

Line 5 (20 spaces total)

8" x 8" only

--	--	--	--	--	--	--	--	--	--	--	--	--	--	--	--	--	--	--	--

PLEASE CHECK BRICK SIZE: ☐ 4" X 8" ☐ 8"X8" ☐ Clipart add \$25 ☐ Add a Mini Replica Brick

Completed forms can be mailed along with your check to:

Friends of Dewey Parks, 608 South Barclay Ave. Dewey, OK 74029

Please make checks payable to "Friends of Dewey Parks".

If you have questions, please email: [louise.ind608@gmail.com](mailto:louise.ind608@gmail.com)